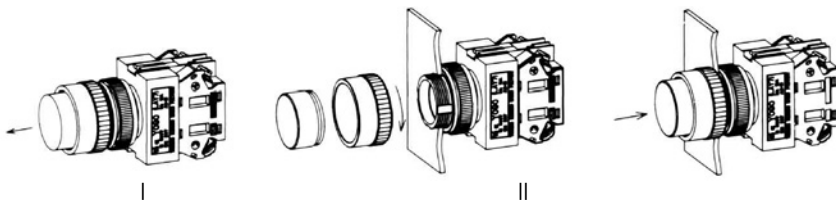
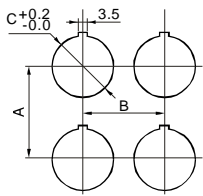


Instruction



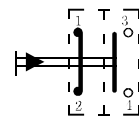
- I ,Take out the head with a starter, and unscrew the aluminum screw.
- II ,Then put the switch into the panel's hole.
- III ,Screw the screw, then put the head onto the switch.

Installation Dimensions



Type	A	B	C
Normal, Key- lock	≥50mm	≥40mm	Φ22mm Φ25mm Φ30mm
Selector	≥55mm	≥40mm	
Mushroom	≥50mm	≥50mm	
Big Mushroom	≥70 mm	≥70mm	

Circuit Diagram



The switch code is 11.
1,2 are normal closed;
3,4 are normal opened;
The NC contact and NO contact can be combined freely.

The Contact Pair's Close-open State Chart of the Selector Switches and Key-lock Switches.

a, The Contact Pair's Close-open State Chart of 2-position Selector Switch.

Number	Type	↙	↘
1	Y090-11■/2◆	○●●●	●●●○
2	Y090-02■/2◆	●●●●	○●●○
3	Y090-20■/2◆	○●●○	●●●●
4	Y090-22■/2◆	○●●○	●●●○
5	Y090-13■/2◆	●●●●	○●●○
6	Y090-31■/2◆	○●●○	●●●○
7	Y090-04■/2◆	●●●●	○●●○
8	Y090-40■/2◆	○●●○	●●●●
9	Y090-42■/2◆	●●●●	○●●○
10	Y090-24■/2◆	○●●○	●●●○
11	Y090-06■/2◆	●●●●	○●●○
12	Y090-60■/2◆	○●●○	●●●○
13	Y090-33■/2◆	○●●○	●●●○
14	Y090-15■/2◆	●●●●	○●●○
15	Y090-51■/2◆	○●●○	●●●○

b, The Contact Pair's Close-open State Chart of 3-position Selector Switch.

Number	Type	↙	↑	↘
1	Y090-11■/3◆	●●●●	○●●○	○●●○
2	Y090-02■/3◆	○●●○	●●●●	●●●○
3	Y090-20■/3◆	●●●○	○●●○	○●●○
4	Y090-22■/3◆	○●●○	●●●○	●●●○
5	Y090-13■/3◆	●●●●	○●●○	○●●○
6	Y090-31■/3◆	●●●○	○●●○	○●●○
7	Y090-04■/3◆	○●●○	●●●○	●●●○
8	Y090-40■/3◆	●●●○	○●●○	○●●○
9	Y090-42■/3◆	○●●○	●●●○	●●●○
10	Y090-24■/3◆	●●●○	○●●○	○●●○
11	Y090-06■/3◆	○●●○	●●●○	●●●○
12	Y090-60■/3◆	●●●○	○●●○	○●●○
13	Y090-33■/3◆	●●●○	○●●○	○●●○
14	Y090-15■/3◆	○●●○	●●●○	●●●○
15	Y090-51■/3◆	●●●○	○●●○	○●●○

Note:1, ○●●○ express open state, ●●●○ express close state.

2, If you need other contact state, please tell us.